



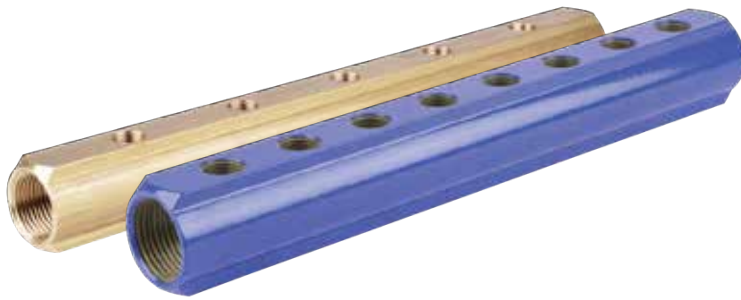
COLLECTORS 117-118

rtc TYPE

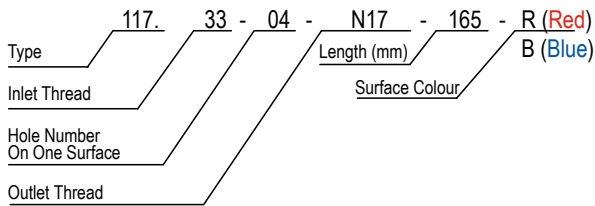


Manifolds RTC 117-118-119 serie

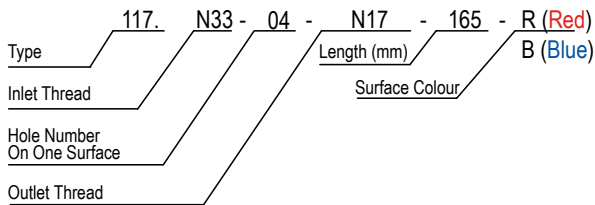
rtc 117 BRASS COLLECTORS



rtc 117 BSP THREAD (Standart Brass Collectors)



rtc 117 NPT THREAD (Brass Collectors)



Thread Size Explanations

- BSP=G
- NPT=N
- (1/4" = 13)
- (3/8" = 17)
- (1/2" = 21)
- (3/4" = 26)
- (1" = 33)
- (1-1/4" = 42)
- (1-1/2" = 48)
- (2" = 60)

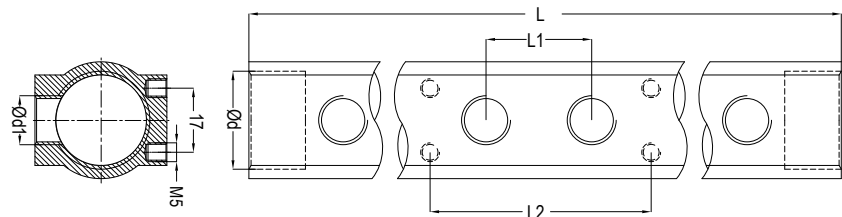


Collector Carrier

Order No:

117 CC 70 - (For 117.26 & 117.33)

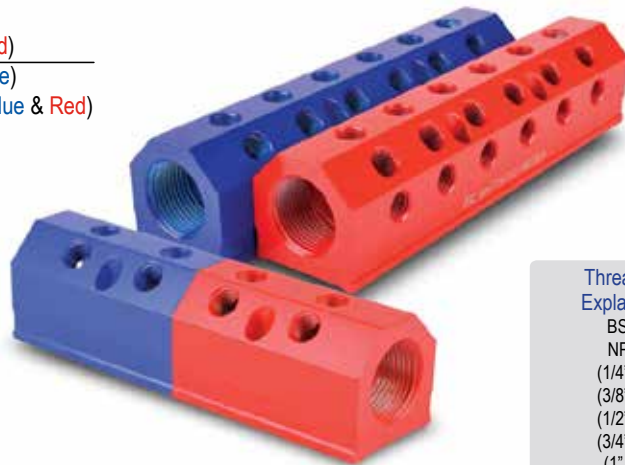
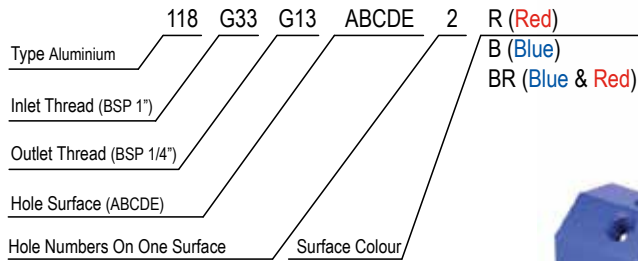
117 CC 90 - (For 117.42)



Ød	Order No / Bestellnr.	Ød1	L	L1	L2	
3/4	117.26-04-13-150	1/4	150	30		
	117.26-05-13-180		180			
	117.26-06-13-210		210			
	117.26-07-13-240		240			
	117.26-08-13-270		270			
	117.26-09-13-300		300			
	117.26-10-13-330		330			
	117.26-11-13-360		360			
	117.26-12-13-390		390			
	117.26-04-17-165		3/8			165
	117.26-05-17-200					200
	117.26-06-17-235					235
117.26-07-17-270	270					
117.26-08-17-305	305					
117.26-09-17-340	340					
1	117.26-10-17-375	1/4	375	70		
	117.26-11-17-410		410			
	117.26-12-17-445		445			
	117.33-04-13-165		3/8			165
	117.33-05-13-200					200
	117.33-06-13-235					235
	117.33-07-13-270					270
	117.33-08-13-305					305
	117.33-09-13-340					340
	117.33-10-13-375					375
	117.33-11-13-410					410
	117.33-12-13-445					445
117.33-04-17-165	3/8	165				
117.33-05-17-200		200				
117.33-06-17-235		235				
117.33-07-17-270		270				
117.33-08-17-305		305				
117.33-09-17-340		340				
1-1/4	117.33-10-17-375	1/2	375	40	150	
	117.33-11-17-410		410			
	117.33-12-17-445		445			
	117.33-04-21-210		3/8			210
	117.33-05-21-260					260
	117.33-06-21-310					310
	117.33-07-21-360					360
	117.33-08-21-410					410
	117.33-09-21-460					460
	117.33-10-21-510					510
	117.33-11-21-560					560
	117.33-12-21-610					610
117.33-16-21-810	810					
117.33-20-21-1010	1010					
1-1/4	117.42-04-17-196	3/8		196	40	150
	117.42-05-17-236		236			
	117.42-06-17-276		276			
	117.42-08-17-356		356			
	117.42-10-17-436		436			
	117.42-12-17-516		516			
	117.42-16-17-676	676				
	117.42-04-21-226	1/2	226	50		
	117.42-05-21-276		276			
	117.42-06-21-326		326			
	117.42-07-21-376		376			
	117.42-08-21-426		426			
117.42-10-21-526	526					
117.42-12-21-626	626					

Manifolds RTC 117-118-119 serie

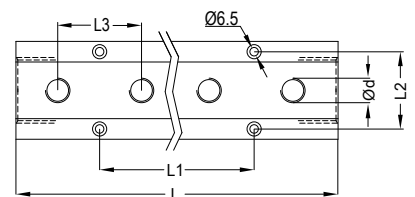
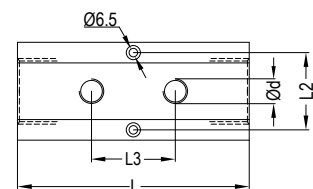
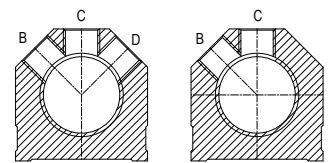
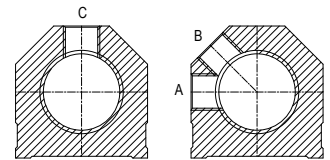
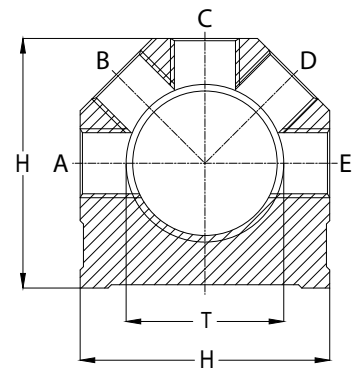
118 ALUMINIUM COLLECTORS **rtc**



Thread Size Explanations

- BSP=G
- NPT=N
- (1/4" = 13)
- (3/8" = 17)
- (1/2" = 21)
- (3/4" = 26)
- (1" = 33)
- (1-1/4" = 42)
- (1-1/2" = 48)
- (2" = 60)

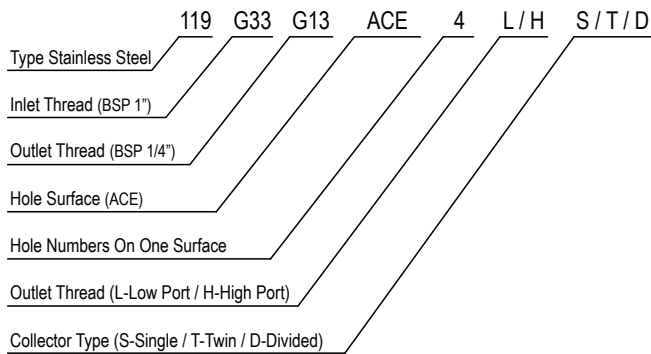
T Inlet Thread	Ød Outlet Thread	Number of Holes on one Surface	L	L1	L2	L3	H
3/4	1/4	2	74	0	35	31	44.5
		4	132	62			
		6	194	124			
		8	256	186			
	3/8	2	90	0	35	40	44.5
		4	165	80			
		6	245	160			
		8	325	240			
1	1/4	2	103	0	38	40	51
		4	183	80			
		6	263	160			
		8	343	240			
	3/8	2	123	0	38	40	51
		4	210	100			
		6	290	180			
		8	370	260			
1-1/4	1/4 - 3/8 - 1/2	2	152	0	50	51	66
		4	254	101.6			
		6	355	203.2			
		8	457	304.8			
1-1/2	3/8 - 1/2	2	152	0	50	51	76
		4	254	101.6			
		6	355	203.2			
		8	457	304.8			
2	3/8 - 1/2 - 3/4	2	178	0	72.5	63.5	89
		4	305	127			
		6	432	254			
		8	559	381			



Kuwatec
a Wilmod company

Manifolds RTC 117-118-119 serie

rtc 119 STAINLESS STEEL COLLECTORS



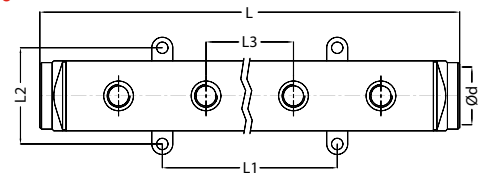
Code Examples

119G33G13ACE4LS - Single Profile Low Port
 119G33G13ACE4HS - Single Profile High Port
 119G33G13ACE4LT - Twin Profile Low Port
 119G33G13ACE4HT - Twin Profile High Port
 119G33G13ACE4LD - Divided Profile Low Port
 119G33G13ACE4HD - Divided Profile High Port

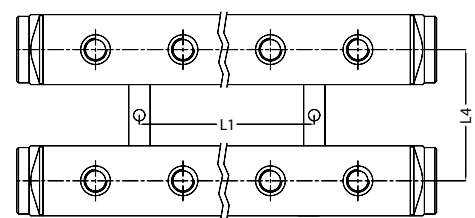
Thread Size

BSP=G
 NPT=N
 (1/4" = 13)
 (3/8" = 17)
 (1/2" = 21)
 (3/4" = 26)
 (1" = 33)

Single Profile

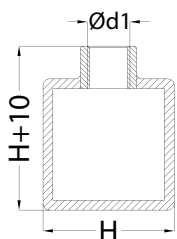


Twin Profile

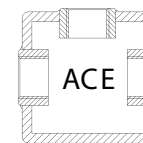
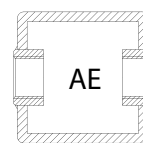
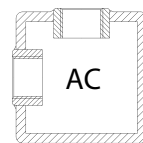
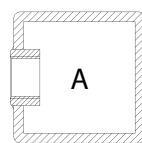
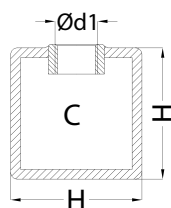


T Inlet Thread	Ød Outlet Thread	Number of Holes on one Surface	L	L1	L2	L3	L4	H
1	1/4 - 3/8	2	140	0	55	50	75	40
		4	240	100				
		6	340	200				
		8	440	300				
1-1/4	1/4 - 3/8 - 1/2	2	140	0	65	50	90	50
		4	240	100				
		6	340	200				
		8	440	300				
1-1/2	1/4 - 3/8 - 1/2	2	140	0	65	50	100	50
		4	240	100				
		6	340	200				
		8	440	300				

High Port



Low Port



info@wilmod.nl
 www.wilmod.nl

Amethystweg 39 \ 2665 NT Bleiswijk
 T +31 79 346 19 19

info@kuwatec.nl
 www.kuwatec.nl

Kuwatec
 a Wilmod company